



# Student Services Report

October 15<sup>th</sup> , 2024

6:30pm

# Agenda



Highlights



Designation Data



Inclusive Library



Naloxone Program



District Updates

# Designation Data



### DESIGNATION NUMBERS 2014 to PRESENT

LOW INCIDENCE	LEVEL 1		LEVEL 2					LVLS 1&2	LVL 3 H	TOTAL LOW INC.	HIGH INCIDENCE	K	P	Q	R	TOTAL HIGH INC.	ALL DES. TOTALS
	A	B	C	D	E	F	G										
<b>CURRENT:</b>	3	0	13	202	2	10	299	529	141	670	<b>CURRENT</b>	41	13	249	121	424	1094
SEPTEMBER 2024	3	0	13	200	2	10	298	526	140	666	SEPTEMBER 2024	40	12	243	119	414	1080
FEBRUARY 2024	3	0	17	202	3	6	267	498	156	654	FEBRUARY 2024	41	7	245	121	414	1068
SEPTEMBER 2023	3	0	18	193	3	6	251	474	145	619	SEPTEMBER 2023	37	5	230	110	382	1001
FEBRUARY 2023	4	0	20	185	5	4	205	423	156	579	FEBRUARY 2023	43	4	238	91	376	955
SEPTEMBER 2022	4	0	16	177	5	3	199	404	134	538	SEPTEMBER 2022	42	4	222	82	350	888
FEBRUARY 2022	5	0	19	174	5	3	191	397	139	536	FEBRUARY 2022	34	6	217	68	325	861
SEPTEMBER 2021	5	0	19	166	5	2	185	382	126	508	SEPTEMBER 2021	37	6	214	67	324	832
FEBRUARY 2021	5	0	22	168	6	2	159	362	126	488	FEBRUARY 2021	31	6	219	68	324	812
SEPTEMBER 2020	5	1	20	163	6	2	154	351	108	459	SEPTEMBER 2020	32	6	207	68	313	772
FEBRUARY 2020	6	1	20	165	5	2	153	352	107	459	FEBRUARY 2020	35	5	227	75	342	801
SEPTEMBER 2019	6	1	20	162	5	3	142	339	90	429	SEPTEMBER 2019	39	5	210	69	323	752
FEBRUARY 2019	7	0	18	168	6	6	129	334	83	417	FEBRUARY 2019	35	7	223	61	326	743
SEPTEMBER 2018	7	0	18	162	5	6	128	326	77	403	SEPTEMBER 2018	33	6	210	53	302	705
FEBRUARY 2018	8	0	17	150	7	8	124	314	70	384	FEBRUARY 2018	33	5	227	44	309	693
SEPTEMBER 2017	8	0	18	146	7	8	120	307	70	377	SEPTEMBER 2017	32	5	217	38	292	669
FEBRUARY 2017	6	0	17	150	10	11	104	298	90	388	FEBRUARY 2017	28	0	222	32	282	670
SEPTEMBER 2016	6	0	19	144	10	11	99	289	79	368	SEPTEMBER 2016	25	0	208	31	264	632
FEBRUARY 2016	7	0	22	137	10	12	92	280	67	347	FEBRUARY 2016	21	0	214	36	271	618
SEPTEMBER 2015	6	0	20	135	11	13	87	272	62	334	SEPTEMBER 2015	21	0	198	35	254	588
FEBRUARY 2015	5	0	23	124	9	13	74	248	48	296	FEBRUARY 2015	23	1	213	20	257	553
SEPTEMBER 2014	5	0	23	122	10	12	73	245	36	281	SEPTEMBER 2014	20	1	185	22	228	509
FEBRUARY 2014	6	0	16	120	10	12	67	231	36	267	FEBRUARY 2014	27	1	223	21	272	539

# Inclusive Library





## **Teacher Librarian**

Priority #3 Attitudinal

MPSD will increase understanding for ALL in the district on invisible/visible disabilities

Survey school-based teacher librarians on inclusive resources and materials



## **Teacher Librarian**

Priority #3 Attitudinal

MPSD will increase understanding for ALL in the district on invisible/visible disabilities

With representation, seek out inclusive resources for schools and libraries.

# Curriculum Connections

Select Language Learn 75 Curriculum Connections

Mission Public Schools

Public Engagement Portal Facebook Instagram ACCESSIB

Programs & Services District Info Governance Contact Us News Careers

Íl te Stó:lō temexw

Mission Public Schools where we work and learn... Traditional, Ancestral, Unsurrendered, and Shared territories of Stó:lō people, of Leq'á:mel, Semá:th, Máthxwi, wó:lt'el First Nations, stewards of this land memorial.

Calendar

11 OCT	14 OCT	15 OCT	21 OCT	25 OCT
Day of the Girl	THANKSGIVING DAY - STUDENTS NOT IN SESSION	Public Meeting of the Board of Education	DPAC Meeting 7:00 PM- 9:00 PM	Non-ins Day, ALL STUDEN

Mission

WELCOME ANTI-RACISM INCLUSION SEL

CURRICULUM STARTING GUIDE RESOURCES

ASSESSMENT PL

## Curriculum Connections

Mission Public School District is located on the Traditional, Ancestral, Unsurrendered, and Shared territories of Stó:lō people, of Leq'á:mel, Máthxwi, Sq'ewlets and Qwó:lt'el First Nations, stewards of this land since time immemorial.

Halq'eméylem is the language of this land and of Stó:lō ancestors. The place from where Halq'eméylem (Upriver dialect) originates is Leq'á:mel, and it has been this way since time immemorial.

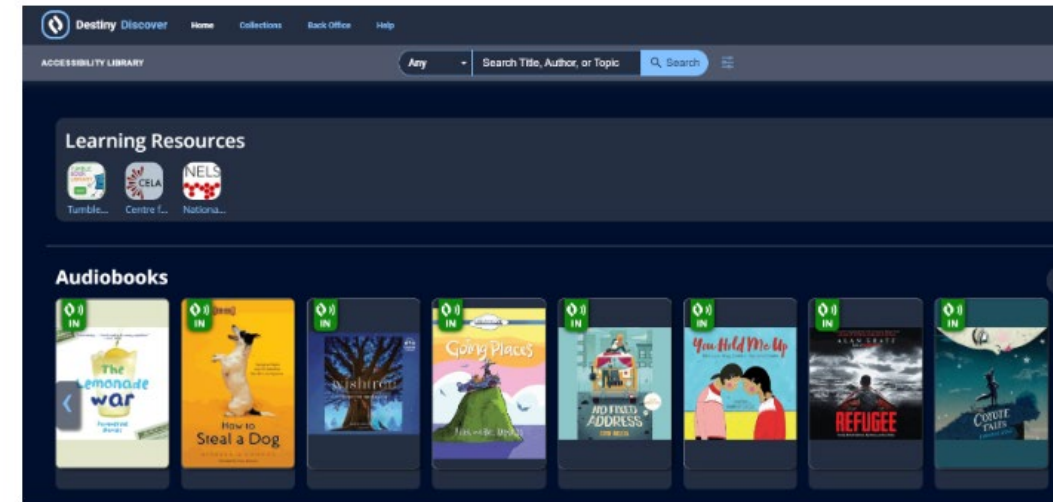
Logos for various First Nations: Ojibwa, Kwantlen First Nations, etc.



# MPSD Accessible Library

\$13,000 START UP GRANT  
FROM MISSION  
COMMUNITY  
FOUNDATION

**\*\*New! (October 2024)\*\*** **MPSD Accessibility Library**



■ [Link to Accessibility Library Online Catalogue](#)

**Inclusion Book Shelf:**



# Naloxone Program

AME - staff trained, nasal naloxone on site  
CHE - need staff trained  
CME - staff trained, nasal naloxone on site  
DER - staff trained, nasal naloxone on site  
DEW - staff trained, nasal naloxone on site  
ESR - staff trained, nasal naloxone on site  
Hatzic - staff trained, nasal naloxone on site  
HTA - need staff trained  
Central - staff trained, nasal naloxone on site  
SIL - In Progress

SFE - staff trained, nasal naloxone on site  
WHE - staff trained, nasal naloxone on site  
WIN - - staff trained, nasal naloxone needed  
HMS - staff trained, nasal naloxone on site  
HPMS - staff trained, nasal naloxone on site  
MSS - staff trained, nasal naloxone on site  
Riverside - staff trained, nasal naloxone on site  
MOL - staff trained, nasal naloxone on site  
FLC - staff trained, nasal naloxone on site



# District Updates



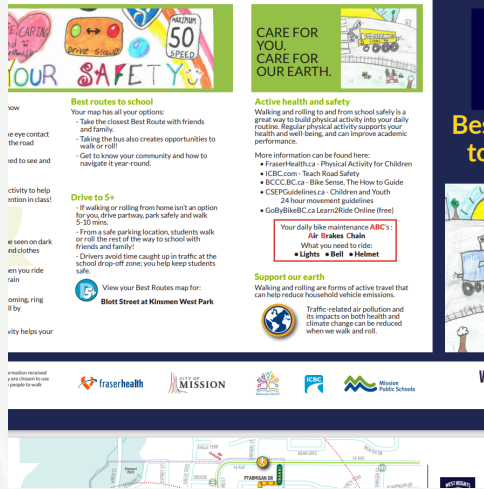
# Hatzic Elementary

SENSORY ROOM



# Hatzic Elementary

ISP KITCHEN



## Brochure:

Safe and accessible ways to walk to West Heights for all students. It also includes safe spaces for families who live greater than walking distance where they can be dropped off and walk the remaining 5 minutes.

# West Heights Initiatives

## New Basketball Hoops:

- This allows us the equipment to host and therefore allow more students to participate in basketball as transportation will no longer be a barrier.

## New School Motto:

- As a school we have just begun a process where we will come up with a new school motto that is reflective of our belief that everyone is welcome. We no longer use late slips, rather they are Welcome Slips greeting students in Halqemeylem.

## Dance Club:

- West Heights hosts a Bhangra dance club at lunch for all students interested



[This Photo](#) by Unknown Author is licensed under [CC BY-SA](#)

## Albert McMahon

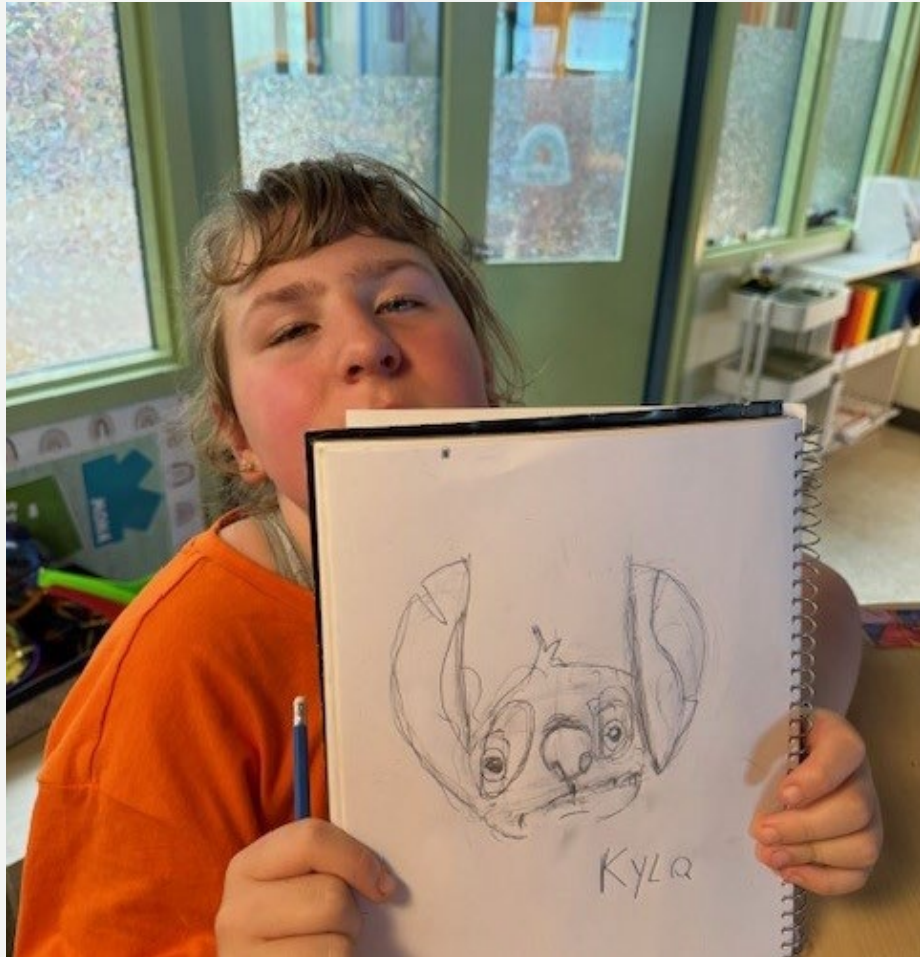
- Inclusive swing install last month.
- Variety grant
- AME will be featured on Global News for Variety Week



## ESR

We have a brand new, inclusive playground, funded in part by parents and through the government grant. Includes some playable music pieces in keeping with our arts school 😊





# Stave Falls Elementary

Directed Drawing!

MPSD mentor teachers planned and taught multiple sessions of “Inclusion Studio” with for three high school classes, including staff, to support immersive learning about inclusion.

NEW STUDIO THEME  
FEB 23, 28, 29TH

INCLUSION IN  
THE  
CLASSROOM

WORK WITH LISA STEVENS AND CAMILLE ANDERSON TO COLLABORATE ON HOW TO DESIGN AN INCLUSIVE LESSON

IDEAS TO ENHANCE CLASSROOM ENVIRONMENT?

WHAT IS MY CLASS PROFILE?

CONTACT CAMILLE ANDERSON TO SCHEDULE

## Crisis Management Manual



# Flight Team

Traumatic Events Systems

Center for Trauma Informed Practices



# Mental Health in Schools

District Principal  
Beth-Anne Cullen



Thank you!